

Defining a first entity model

How-to documentation



Entity types for content

- **Text** = text
- **MediaAsset** = image with one or more MediaObjects for different image formats, for example TIFF for high resolution, JPG for low resolution and PNG for thumbnail
- **Price** = all information relevant to prices like price, scaled price, (quantity breaks), purchase quantities, quantity units, packaging units, currency, etc.
- **KeyValue** = features or attributes, for example “color: pink”. Units as Meter for “height: 10m” are kept in extra KeyValues, prepared automatically by the connector

Entity types

Content Entity

- Text
- MediaAsset
- Price
- KeyValue

Bucket Entity

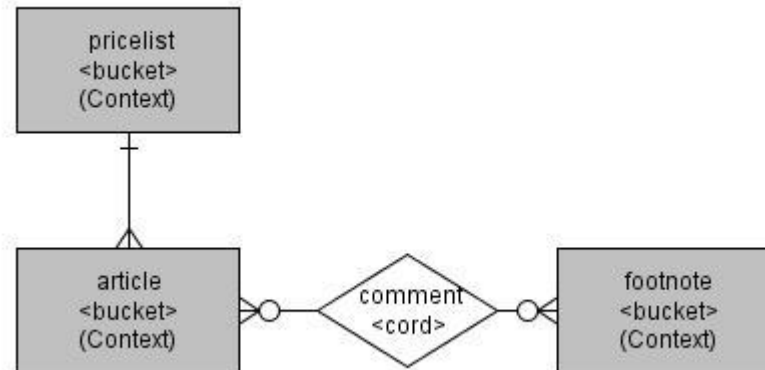
- Can contain any number of content entities
- Can have sub bucket entities
- Has a single parent bucket (or none)
- Can be the root for tree views

Cord Entity

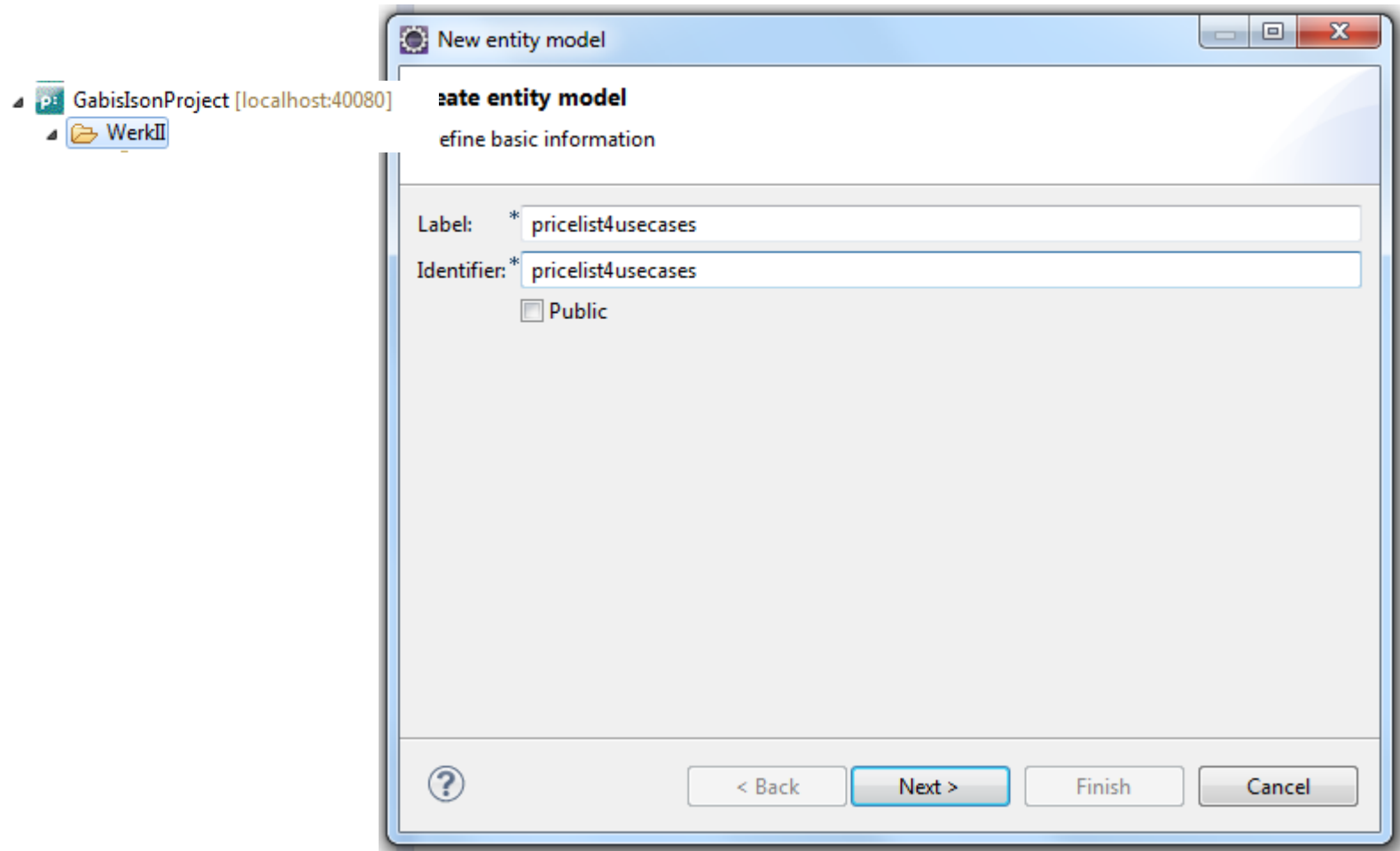
- Connects any two bucket entities
- For references or any n:m link
- If special content is needed for the cord, a bucket entity can be linked to the cord

Creating a first entity model

- Lets think of a pricelist, containing only a number of articles
- The pages might contain footnotes
- Any footnote might be needed for any article



Creating a first entity model – step 1



Creating buckets

- Create buckets with wizard in context menu of entity model

Creating a first entity model

1. The test model contains three buckets: pricelist, article and footnote.
2. Pricelist has sub entity article.
3. Article and footnote are connected with cord comment.
4. Article has these content entities:
 5. number (class text, 1:1)
 6. name (class text, 1:1)
 7. image (class media asset 1:0/1)
 8. attributes (class key value, 1:0/n)
 9. price (class price 1:1)
10. Footnote has the content entity note (class text, 1:1).

Entity model report

- Function in the context menu of an entity model

Connecting entities to data

- Data is in mysql-DB pricelist.
- Connector `com.priint.pubserver.connector.pubdb.ContentConnector` must be configured – in devstack done already
- In all entities set Connector, Instance and Connector Entity Identifier
 - For buckets: `<table>_<keyword>`, for example in entity Pricelist container `_Pricelist`.
 - For content: `<type>_<buckettable>_<attributekeyword>`

Is your model working?

- Use „Bucket tree test“ in entity model editor